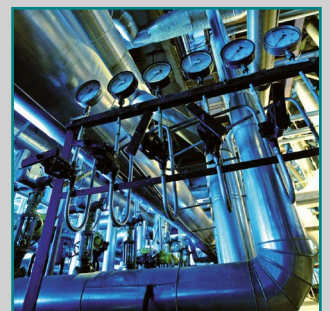
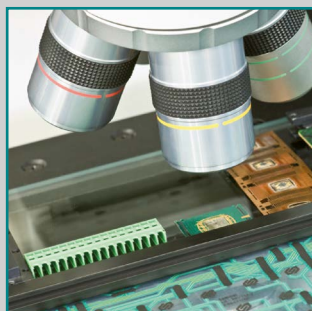


Oil-free SCROLL compressors

RENNER SCROLL^{line} compressors



Motor size: 1.5 to 30.0 kW



RENNER GmbH Kompressoren – success rooted in tradition.

RENNER GmbH Kompressoren have been known for reliable compressed air for more than 25 years. As a family owned business with fast decision-making processes, we set the benchmarks in developing, manufacturing and selling efficient screw compressors.

RENNER has approx. 180 employees to provide you with first-class technical advice, robust compressor engineering, and reliable service in virtually more than one hundred countries. We offer fast maintenance services in Germany and all over the world through our large distributor network. You can rely on the high quality standards of our oil-injected screw compressors as well as in the segments of oil-free compressed air and piston compressors. We are proud to assist you as a competent sales and service partner worldwide!



SCROLLline compressors

In food production, electronic manufacturing or the pharmaceutical industry, the quality of compressed air is of utmost importance for the production processes. The oil-free **SCROLLline**-compressors made by RENNER are specially suited to applications with high requirements for pure compressed air excluding the risk of oil contamination. The result: 100% oil-free compressed air. The high degree of reliability and low operating maintenance costs make RENNER **SCROLLline**-compressors a sound investment.

The compressed air generated is 100% oil-free

The compression of the air is continuous through the interplay between a fixed and a orbiting SCROLL element. This infinitely repeating compression process guarantees a low-pulsation compressed air flow. The few number of moving components and the use of high quality materials represent a warranty for the safe and reliable use of the machine over the entire operating time.

Versatile – less space for more compressed air generation

Their compactness and the optional refrigeration dryer allow RENNERs' **SCROLLline** compressors to fit into any environment and ensure efficiency and reliability in production. They are designed to be a versatile unit in a production environment and represent troublefree air supply for many years.

The multiple compressor system with two, three or four independently working compressor units is particularly suited to applications with greatly fluctuating compressed air consumption or for applications that absolutely require reserve capacity for additional safety.

The base load change over switch of the RENNERtronic Plus control integrated in the multiple compressor systems in the **SCROLLline SuperSilent**-range optimises the use of several SCROLL compressors to a tee. This ensures that an exact performance identity is reached across all available units. The effectiveness of the compressor is optimised by the control. Status and monitoring messages are shown large and clearly in the display.

As a **SCROLLline SuperSilent**-model, these compressors are also suitable for operating in control workplace environment. Noise levels from 52 dB(A) speak for themselves.

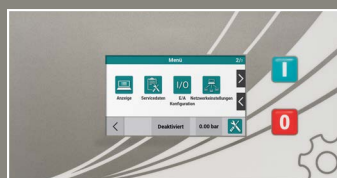
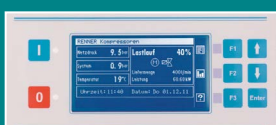
The right model for purer air

You can expect more from RENNER, the innovative manufacturer with experience in the development and manufacture of **SCROLLline** compressors. The result is an extensive range of oil-free **SCROLLline** compressors – a clean solution for those who want more.

Advantages of the RENNERtronic Plus

- Easier operation due to a larger display
- Integrated timer with 7 channels
- Displays
 - the power consumption
 - the mains pressure within easily adjustable pressure limit
 - the compressor temperature
 - faults / fault message storage
 - maintenance intervals

Easy to operate thanks to text display of all messages and additional light-emitting diodes.



Advantages of RENNERtronic Touch

- Smartphone-like operation
- Events history
- Pressure and temperature diagram with hourly scaling.
- Scheduler with six channels
- USB-port
- Easy upgrade to RENNERtronic Plus Touch
- Service indicator
- Display of compressor utilisation
- Different code levels
- Flexible inputs and outputs
- Control of frequency converters

**WITH NEW CONTROL
RENNERTRONIC (PLUS) TOUCH
FROM 1,5 – 7,5 KW***

Advantages of RENNERtronic Plus Touch

The RENNERtronic Plus Touch fulfils **all the functions of the RENNERtronic Touch**. But it can do even more!

- 7" touchscreen
- Scheduler with eight channels
- Pressure and temperature diagram with daily, weekly and monthly scaling
- Base Load Change Over



* Multiple compressors 2022 with new control RENNERtronic Plus Touch



SCROLL compressors

SL-I 1.5 – 7.5
SLK-I 1.5 – 7.5 with refrigeration dryer



SL-I 1.5 – 7.5 / SLK-I 1.5 – 7.5

Model	Free air delivery ⁽¹⁾				Motor power		Compressed air outlet	Noise level dB(A) ⁽²⁾		Dimensions L x W x H	Weight
	8 bar		10 bar		kW	HP		inch	8 bar		
	l/min	cfm	l/min	cfm			mm			kg	
SL-I 1.5	160	5.65	–	–	1.5	2.0	G½	65	–	760 x 550 x 920	137
SL-I 2.2	238	8.40	195	6.90	2.2	3.0	G½	67	65	760 x 550 x 920	140
SL-I 3.7	397	14.00	360	12.70	3.7	5.0	G½	68	68	760 x 550 x 920	158
SL-I 4.5	–	–	405	14.30	4.5	6.0	G½	–	68	760 x 550 x 920	181
SL-I 5.5	627	22.15	520	18.35	5.5	7.5	G½	69	67	760 x 550 x 920	181
SL-I 7.5	890	31.45	755	26.65	7.5	10.0	G½	69	68	760 x 550 x 920	195
SLK-I 1.5	160	5.65	–	–	1.5	2.0	G½	65	–	1015 x 550 x 920	167
SLK-I 2.2	238	8.40	195	6.90	2.2	3.0	G½	67	65	1015 x 550 x 920	170
SLK-I 3.7	397	14.00	360	12.70	3.7	5.0	G½	68	68	1015 x 550 x 920	188
SLK-I 4.5	–	–	405	14.30	4.5	6.0	G½	–	68	1015 x 550 x 920	211
SLK-I 5.5	627	22.15	520	18.35	5.5	7.5	G½	69	67	1015 x 550 x 920	211
SLK-I 7.5	890	31.45	755	26.65	7.5	10.0	G½	69	68	1015 x 550 x 920	225

⁽¹⁾ according to ISO 1217 Annex C

⁽²⁾ according to DIN EN ISO 2151:2009

Options	Part no.
Electronic control RENNERtronic Touch	22295
Electronic control RENNERtronic Plus Touch	22297
Rotation direction control via phase rotation control	10867
Star-delta starter for 1.5 + 2.2 kW (from 5.5 kW inclusive)	on request
Star-delta starter for 3.7 + 4.5 kW (from 5.5 kW inclusive)	on request
Level actuated drain for refrigeration dryer	05311
Pre-filter frame including filter mat for SL-I	15217
Set of pre-filter frames including filter mats for SLK-I	15068
Motor 230 V / single phase for 1.5 kW	24073
Motor 230 V / single phase for 2.2 kW	24074
External suctioning	on request

SCROLL compressors

SLD-I 1.5 – 7.5 on horizontal galvanized air receiver
 SLDK-I 1.5 – 7.5 on galvanized air receiver,
 with refrigeration dryer

all with certificate before start-up
 all air receivers according to AD2000 directives



SLD-I 1.5 – 7.5 / SLDK-I 1.5 – 7.5

Model	Free air delivery ⁽¹⁾				Motor power		Compressed air outlet	Noise level dB(A) ⁽²⁾		Air receiver	Dimensions L x W x H	Weight
	8 bar		10 bar					8 bar	10 bar			
	l/min	cfm	l/min	cfm	kW	HP	inch			ltr	mm	kg
SLD-I 1.5	160	5.65	–	–	1.5	2.0	G½	65	–	90	982 x 550 x 1390	180
SLD-I 2.2	238	8.40	195	6.90	2.2	3.0	G½	67	65	90	982 x 550 x 1390	183
SLD-I 1.5	160	5.65	–	–	1.5	2.0	G½	65	–	2x90	982 x 755 x 1462	233
SLD-I 2.2	238	8.40	195	6.90	2.2	3.0	G½	67	65	2x90	982 x 755 x 1462	236
SLD-I 3.7	397	14.00	360	12.70	3.7	5.0	G½	68	68	2x90	982 x 755 x 1462	254
SLD-I 4.5	–	–	405	14.30	4.5	6.0	G½	–	68	2x90	982 x 755 x 1462	277
SLD-I 5.5	627	22.15	520	18.35	5.5	7.5	G½	69	67	2x90	982 x 755 x 1462	277
SLD-I 7.5	890	31.45	755	26.65	7.5	10.0	G½	69	68	2x90	982 x 755 x 1462	291
SLDK-I 1.5	160	5.65	–	–	1.5	2.0	G½	65	–	90	1051 x 550 x 1390	210
SLDK-I 2.2	238	8.40	195	6.90	2.2	3.0	G½	67	65	90	1051 x 550 x 1390	213
SLDK-I 1.5	160	5.65	–	–	1.5	2.0	G½	65	–	2x90	1051 x 755 x 1462	263
SLDK-I 2.2	238	8.40	195	6.90	2.2	3.0	G½	67	65	2x90	1051 x 755 x 1462	266
SLDK-I 3.7	397	14.00	360	12.70	3.7	5.0	G½	68	68	2x90	1051 x 755 x 1462	284
SLDK-I 4.5	–	–	405	14.30	4.5	6.0	G½	–	68	2x90	1051 x 755 x 1462	307
SLDK-I 5.5	627	22.15	520	18.35	5.5	7.5	G½	69	67	2x90	1051 x 755 x 1462	307
SLDK-I 7.5	890	31.45	755	26.65	7.5	10.0	G½	69	68	2x90	1051 x 755 x 1462	321

⁽¹⁾ according to ISO 1217 Annex C

⁽²⁾ according to DIN EN ISO 2151:2009

Options	Part no.
Electronic control RENNERtronic	10869
Electronic control RENNERtronic Plus	00829
Star-delta starter for 1.5 + 2.2 kW (from 5.5 kW inclusive)	–
Star-delta starter for 3.7 + 4.5 kW (from 5.5 kW inclusive)	–
Rotation direction control via phase rotation control	10867
Galvanized 4x90 ltr air receiver (supplement on galvanized 2x90 ltr air receiver version)	25984
Kit for 90/250/270/500 ltr air receiver with level-controlled condensate drain	03162
Kit for 2x90/4x90 ltr air receiver with level-controlled condensate drain	13274
Level actuated drain for refrigeration dryer	05311
Pre-filter frame including filter mat for SLD-I	15217
Set of pre-filter frames including filter mats for SLDK-I	15068
Motor 230 V / single phase for 1.5 kW	24073
Motor 230 V / single phase for 2.2 kW	24074
External suctioning	–



SCROLL compressors

SLD-I 1.5 – 7.5 on galvanized air receiver
SLDK-I 1.5 – 7.5 on galvanized air receiver,
with refrigeration dryer



air receivers according to AD2000 directives (with hand-hole)

SLD-I 1.5 – 7.5 / SLDK-I 1.5 – 7.5

Model	Free air delivery ⁽¹⁾				Motor power		Compressed air outlet	Noise level dB(A) ⁽²⁾		Air receiver	Dimensions L x W x H	Weight
	8 bar		10 bar		kW	HP		inch	8 bar			
	l/min	cfm	l/min	cfm			kg					
SLD-I 1.5	160	5.65	–	–	1.5	2.0	G½	65	–	250	1405 x 617 x 1535	222
SLD-I 2.2	238	8.40	195	6.90	2.2	3.0	G½	67	65	250	1405 x 617 x 1535	225
SLD-I 3.7	397	14.00	360	12.70	3.7	5.0	G½	68	68	250	1405 x 617 x 1535	243
SLD-I 4.5	–	–	405	14.30	4.5	6.0	G½	–	68	250	1405 x 617 x 1535	266
SLD-I 5.5	627	22.15	520	18.35	5.5	7.5	G½	69	67	250	1405 x 617 x 1535	266
SLD-I 7.5	890	31.45	755	26.65	7.5	10.0	G½	69	68	250	1405 x 617 x 1535	280
SLDK-I 1.5	160	5.65	–	–	1.5	2.0	G½	65	–	250	1405 x 617 x 1535	252
SLDK-I 2.2	238	8.40	195	6.90	2.2	3.0	G½	67	65	250	1405 x 617 x 1535	255
SLDK-I 3.7	397	14.00	360	12.70	3.7	5.0	G½	68	68	250	1405 x 617 x 1535	273
SLDK-I 4.5	–	–	405	14.30	4.5	6.0	G½	–	68	250	1405 x 617 x 1535	296
SLDK-I 5.5	627	22.15	520	18.35	5.5	7.5	G½	69	67	250	1405 x 617 x 1535	296
SLDK-I 7.5	890	31.45	755	26.65	7.5	10.0	G½	69	68	250	1405 x 617 x 1535	310

⁽¹⁾ according to ISO 1217 Annex C

⁽²⁾ according to DIN EN ISO 2151:2009

Options	Part no.
Electronic control RENNERtronic	10869
Electronic control RENNERtronic Plus	00829
Star-delta starter for 1.5 + 2.2 kW (from 5.5 kW inclusive)	on request
Star-delta starter for 3.7 + 4.5 kW (from 5.5 kW inclusive)	on request
Rotation direction control via phase rotation control	10867
Galvanized 500 ltr air receiver (supplement on galvanized 250 ltr air receiver version)	17459
Kit for 90/250/270/500 ltr air receiver with level-controlled condensate drain	03162
Level actuated drain for refrigeration dryer	05311
Pre-filter frame including filter mat for SLD-I	15217
Set of pre-filter frames including filter mats for SLDK-I	15068
Motor 230 V / single phase for 1.5 kW	24073
Motor 230 V / single phase for 2.2 kW	24074
External suctioning	on request

RENNER

Kompressoren



CLEAN!

Oil-free SCROLL compressors

- 100% oil-free
- 8 + 10 bar
- Efficient and reliable
- Space-saving design
- 90 / 2x90 ltr air receiver according to AD2000 directives
- Rear duct silencer for operation in working area
- Multiple compressor for fluctuating air demand or as backup
- Short delivery time



SCROLL compressors

SL-S 1.5 – 7.5
SLK-S 1.5 – 7.5 with refrigeration dryer



SL-S 1.5 – 7.5 / SLK-S 1.5 – 7.5

Model	Free air delivery ⁽¹⁾				Motor power		Compressed air outlet	Noise level dB(A) ⁽²⁾		Dimensions L x W x H mm	Weight kg
	8 bar		10 bar		kW	HP		inch	8 bar		
	l/min	cfm	l/min	cfm							
SL-S 1.5	160	5.65	–	–	1.5	2.0	G½	52	–	910 x 550 x 920	157
SL-S 2.2	238	8.40	195	6.90	2.2	3.0	G½	55	53	910 x 550 x 920	160
SL-S 3.7	397	14.00	360	12.70	3.7	5.0	G½	54	54	910 x 550 x 920	178
SL-S 4.5	–	–	405	14.30	4.5	6.0	G½	–	54	910 x 550 x 920	201
SL-S 5.5	627	22.15	520	18.35	5.5	7.5	G½	59	57	910 x 550 x 920	201
SL-S 7.5	890	31.45	755	26.65	7.5	10.0	G½	63	61	910 x 550 x 920	215
SLK-S 1.5	160	5.65	–	–	1.5	2.0	G½	52	–	1165 x 550 x 920	187
SLK-S 2.2	238	8.40	195	6.90	2.2	3.0	G½	55	53	1165 x 550 x 920	190
SLK-S 3.7	397	14.00	360	12.70	3.7	5.0	G½	54	54	1165 x 550 x 920	208
SLK-S 4.5	–	–	405	14.30	4.5	6.0	G½	–	54	1165 x 550 x 920	231
SLK-S 5.5	627	22.15	520	18.35	5.5	7.5	G½	59	57	1165 x 550 x 920	231
SLK-S 7.5	890	31.45	755	26.65	7.5	10.0	G½	63	61	1165 x 550 x 920	245

⁽¹⁾ according to ISO 1217 Annex C

⁽²⁾ according to DIN EN ISO 2151:2009

Options	Part no.
Electronic control RENNERtronic Touch	22295
Electronic control RENNERtronic Plus Touch	22297
Star-delta starter for 1.5 + 2.2 kW (from 5.5 kW inclusive)	on request
Star-delta starter for 3.7 + 4.5 kW (from 5.5 kW inclusive)	on request
Rotation direction control via phase rotation control	10867
Level actuated drain for refrigeration dryer	05311
Pre-filter frame including filter mat for SL-S / SLK-S	03152
Motor 230 V / single phase for 1.5 kW	24073
Motor 230 V / single phase for 2.2 kW	24074
External suctioning	on request

SCROLL compressors

SLD-S 1.5 – 7.5 on galvanized air receiver
 SLDK-S 1.5 – 7.5 on galvanized air receiver,
 with refrigeration dryer

all with certificate before start-up
 air receivers according to AD2000 directives



SLD-S 1.5 – 7.5 / SLDK-S 1.5 – 7.5

Model	Free air delivery ⁽¹⁾				Motor power		Compressed air outlet	Noise level dB(A) ⁽²⁾		Air receiver	Dimensions L x W x H	Weight
	8 bar		10 bar		kW	HP		8 bar	10 bar			
	l/min	cfm	l/min	cfm			inch					
SLD-S 1.5	160	5.65	–	–	1.5	2.0	G½	52	–	90	982 x 550 x 1390	200
SLD-S 2.2	238	8.40	195	6.90	2.2	3.0	G½	55	53	90	982 x 550 x 1390	203
SLD-S 1.5	160	5.65	–	–	1.5	2.0	G½	52	–	2x90	982 x 755 x 1462	253
SLD-S 2.2	238	8.40	195	6.90	2.2	3.0	G½	55	53	2x90	982 x 755 x 1462	256
SLD-S 3.7	397	14.00	360	12.70	3.7	5.0	G½	54	54	2x90	982 x 755 x 1462	274
SLD-S 4.5	–	–	405	14.30	4.5	6.0	G½	–	54	2x90	982 x 755 x 1462	297
SLD-S 5.5	627	22.15	520	18.35	5.5	7.5	G½	59	57	2x90	982 x 755 x 1462	297
SLD-S 7.5	890	31.45	755	26.65	7.5	10.0	G½	63	61	2x90	982 x 755 x 1462	311
SLDK-S 1.5	160	5.65	–	–	1.5	2.0	G½	52	–	90	1165 x 550 x 1390	230
SLDK-S 2.2	238	8.40	195	6.90	2.2	3.0	G½	55	53	90	1165 x 550 x 1390	233
SLDK-S 1.5	160	5.65	–	–	1.5	2.0	G½	52	–	2x90	1165 x 755 x 1462	283
SLDK-S 2.2	238	8.40	195	6.90	2.2	3.0	G½	55	53	2x90	1165 x 755 x 1462	286
SLDK-S 3.7	397	14.00	360	12.70	3.7	5.0	G½	54	54	2x90	1165 x 755 x 1462	304
SLDK-S 4.5	–	–	405	14.30	4.5	6.0	G½	–	54	2x90	1165 x 755 x 1462	327
SLDK-S 5.5	627	22.15	520	18.35	5.5	7.5	G½	59	57	2x90	1165 x 755 x 1462	327
SLDK-S 7.5	890	31.45	755	26.65	7.5	10.0	G½	63	61	2x90	1165 x 755 x 1462	341

⁽¹⁾ according to ISO 1217 Annex C

⁽²⁾ according to DIN EN ISO 2151:2009

Options	Part no.
Electronic control RENNERtronic	10869
Electronic control RENNERtronic Plus	00829
Star-delta starter for 1.5 + 2.2 kW (from 5.5 kW inclusive)	on request
Star-delta starter for 3.7 + 4.5 kW (from 5.5 kW inclusive)	on request
Rotation direction control via phase rotation control	10867
Galvanized 4x90 ltr air receiver (supplement on galvanized 2x90 ltr air receiver version)	25984
Kit for 90/250/270/500 ltr air receiver with level-controlled condensate drain	03162
Kit for 2x90/4x90 ltr air receiver with level-controlled condensate drain	13274
Level actuated drain for refrigeration dryer	05311
Pre-filter frame including filter mat for SLD-S / SLDK-S	03152
Motor 230 V / single phase for 1.5 kW	24073
Motor 230 V / single phase for 2.2 kW	24074
External suctioning	–



SCROLL compressors

SLD-S 1.5 – 7.5 on galvanized air receiver
SLDK-S 1.5 – 7.5 on galvanized air receiver,
with refrigeration dryer



air receivers according to AD 2000 directives (with hand-hole)

SLD-S 1.5 – 7.5 / SLDK-S 1.5 – 7.5

Model	Free air delivery ⁽¹⁾				Motor power		Compressed air outlet	Noise level dB(A) ⁽²⁾		Air receiver	Dimensions L x W x H	Weight
	8 bar		10 bar		kW	HP		inch	8 bar			
	l/min	cfm	l/min	cfm			mm			kg		
SLD-S 1.5	160	5.65	–	–	1.5	2.0	G½	52	–	250	1405 x 617 x 1535	242
SLD-S 2.2	238	8.40	195	6.90	2.2	3.0	G½	55	53	250	1405 x 617 x 1535	245
SLD-S 3.7	397	14.00	360	12.70	3.7	5.0	G½	54	54	250	1405 x 617 x 1535	263
SLD-S 4.5	–	–	405	14.30	4.5	6.0	G½	–	54	250	1405 x 617 x 1535	286
SLD-S 5.5	627	22.15	520	18.35	5.5	7.5	G½	59	57	250	1405 x 617 x 1535	286
SLD-S 7.5	890	31.45	755	26.65	7.5	10.0	G½	63	61	250	1405 x 617 x 1535	300
SLDK-S 1.5	160	5.65	–	–	1.5	2.0	G½	52	–	250	1405 x 617 x 1535	272
SLDK-S 2.2	238	8.40	195	6.90	2.2	3.0	G½	55	53	250	1405 x 617 x 1535	275
SLDK-S 3.7	397	14.00	360	12.70	3.7	5.0	G½	54	54	250	1405 x 617 x 1535	293
SLDK-S 4.5	–	–	405	14.30	4.5	6.0	G½	–	54	250	1405 x 617 x 1535	316
SLDK-S 5.5	627	22.15	520	18.35	5.5	7.5	G½	59	57	250	1405 x 617 x 1535	316
SLDK-S 7.5	890	31.45	755	26.65	7.5	10.0	G½	63	61	250	1405 x 617 x 1535	330

⁽¹⁾ according to ISO 1217 Annex C

⁽²⁾ according to DIN EN ISO 2151:2009

Options	Part no.
Electronic control RENNERtronic	10869
Electronic control RENNERtronic Plus	00829
Rotation direction control via phase rotation control	10867
Star-delta starter for 1.5 + 2.2 kW (from 5.5 kW inclusive)	on request
Star-delta starter for 3.7 + 4.5 kW (from 5.5 kW inclusive)	on request
Galvanized 500 ltr air receiver (supplement on galvanized 250 ltr air receiver version)	17459
Kit for 90/250/270/500 ltr air receiver with level-controlled condensate drain	03162
Level actuated drain for refrigeration dryer	05311
Pre-filter frame including filter mat for SLD-S / SLDK-S	03152
Motor 230 V / single phase for 1.5 kW	24073
Motor 230 V / single phase for 2.2 kW	24074
External suctioning	on request

SCROLL compressors multiple compressor units

SLM-S 7.5 – 30.0

SLKM-S 7.5 – 22.0 with integrated refrigeration dryer

SLDM-S 7.5 – 15.0 on galvanized air receiver

SLDKM-S 7.5 – 11.0 on galvanized air receiver,
with integrated refrigeration dryer

all with electronic control RENNERtronic Plus

air receivers according to AD 2000 directives (with hand hole)

SCROLLline
Industry

oil-free
Made in Germany



SLM-S 7.5 – 30.0 / SLKM-S 7.5 – 22.0 / SLDM-S 7.5 – 15.0 / SLDKM-S 7.5 – 11.0

Model	Free air delivery ⁽¹⁾				Motor power		Compressed air outlet	Noise level dB(A) ⁽²⁾		Air receiver	Dimensions L x W x H	Weight
	8 bar		10 bar		kW	HP		inch	8 bar			
	l/min	cfm	l/min	cfm			mm			kg		
SLM-S 7.5	794	28	720	25	2x 3.7	2x 5.0	G1	58	58	–	1400 x 920 x 1020	435
SLM-S 9.0	–	–	810	28	2x 4.5	2x 6.0	G1	–	59	–	1400 x 920 x 1020	465
SLM-S 11.0	1254	44	1040	37	2x 5.5	2x 7.5	G1	61	60	–	1400 x 920 x 1020	465
SLM-S 13.5	–	–	1215	43	3x 4.5	3x 6.0	G1	–	62	–	1400 x 920 x 1890	820
SLM-S 15.0	1780	63	1510	40	2x 7.5	2x 10.0	G1	65	64	–	1400 x 920 x 1020	485
SLM-S 16.5	1880	66	1560	55	3x 5.5	3x 7.5	G1	64	63	–	1400 x 920 x 1890	820
SLM-S 22.0	2510	89	2080	74	4x 5.5	4x 7.5	G1	66	65	–	1400 x 920 x 1890	955
SLM-S 22.5	2670	95	2265	79	3x 7.5	3x 10.0	G1	68	67	–	1400 x 920 x 1890	840
SLM-S 30.0	3560	125	3020	106	4x 7.5	4x 10.0	G1	71	70	–	1400 x 920 x 1890	975
SLKM-S 7.5	794	28	720	25	2x 3.7	2x 5.0	G1	58	58	–	1400 x 920 x 1020	465
SLKM-S 9.0	–	–	810	28	2x 4.5	2x 6.0	G1	–	59	–	1400 x 920 x 1020	500
SLKM-S 11.0	1254	44	1040	37	2x 5.5	2x 7.5	G1	61	60	–	1400 x 920 x 1020	510
SLKM-S 13.5	–	–	1215	43	3x 4.5	3x 6.0	G1	–	62	–	1400 x 920 x 1890	750
SLKM-S 16.5	1880	66	1560	55	3x 5.5	3x 7.5	G1	64	63	–	1400 x 920 x 1890	750
SLKM-S 22.0	2510	89	2080	74	4x 5.5	4x 7.5	G1	66	65	–	1400 x 920 x 1890	1040
SLDM-S 7.5	794	28	720	25	2x 3.7	2x 5.0	G1	58	58	500	1810 x 948 x 1811	645
SLDM-S 9.0	–	–	810	28	2x 4.5	2x 6.0	G1	–	59	500	1810 x 948 x 1811	675
SLDM-S 11.0	1254	44	1040	37	2x 5.5	2x 7.5	G1	61	60	500	1810 x 948 x 1811	675
SLDM-S 15.0	1780	63	1510	40	2x 7.5	2x 10.0	G1	65	64	500	1810 x 948 x 1811	695
SLDKM-S 7.5	794	28	720	25	2x 3.7	2x 5.0	G1	58	58	500	1810 x 948 x 1811	675
SLDKM-S 9.0	–	–	810	28	2x 4.5	2x 6.0	G1	–	59	500	1810 x 948 x 1811	710
SLDKM-S 11.0	1254	44	1040	37	2x 5.5	2x 7.5	G1	61	60	500	1810 x 948 x 1811	720

⁽¹⁾ according to ISO 1217 Annex C

⁽²⁾ according to DIN EN ISO 2151:2009

Standard features: Base Load Change Over operation by RENNERtronic Plus, loss free automatic condensate drain (only for SLKM-S / SLDKM-S), rotation direction control via phase rotation control.

Options

External suctioning

Part no.

on request

COMPRESSED AIR FOR ALL APPLICATIONS



RENNER GmbH Kompressoren, a family run business established in 1994, develops and assembles economical and energy-efficient compressors. A broad range of compressed air accessories are also part of the product portfolio. The structure and size of the company ensure flexible decisions and short lead times, thus providing optimal focus on the requirements of the customers.

THE RENNER MANUFACTURING AND SUPPLY PROGRAMME:

We can supply you with the right compressor for any application – guaranteed.

SCREW COMPRESSORS:

- From 2.2 to 355 kW
- Up to 40 bar, e.g. for manufacture of PET bottles
- Compact systems with air receiver, refrigeration dryer, and variable speed control
- Heat exchanger integrated or as an external box
- Special applications: gas compression, operation of drilling devices, rail, and special-purpose vehicles
- Customized models designed to customer specifications

OIL-FREE COMPRESSORS:

- SCROLL compressors for oil-free compressed air from 1.5 to 30.0 kW
- Water-injected screw compressors for oil-free compressed air in breathing air quality from 18.5 to 120 kW



PISTON COMPRESSORS:

- From 1.5 to 11.0 kW
- Stationary or mobile, with or without sound insulation

CONTROL SYSTEMS:

- Compressor control systems
- Superordinate control systems
- State-of-the-art web server monitoring



COMPRESSED AIR ACCESSORIES:

- Air filters, air receivers, refrigeration dryers, adsorption dryers, condensate drains, and oil-water-separators

Your RENNER distributor:

RENNER GmbH · Kompressoren

Emil-Weber-Strasse 32
D-74363 Gueglingen

Phone +49 (0) 7135 93193-0
Fax +49 (0) 7135 93193-50

E-Mail: info@renner-kompressoren.de
www.renner-kompressoren.de



DIN EN ISO 9001
REG.-NR. Q1 0205013

